

Model: LV5000 / LV5000T

***USB Interface 9.7" TFT LED Display
With/Without Touch Screen***

USER MANUAL



NOTICE

The manufacturer of the POS pole display makes no representations or warranties, either expressed or implied, by or with respect to anything in this manual, and shall not be liable for any implied warranties of fitness for a particular purpose or for any indirect, special or consequential damages. Information in this document is subject to change without notice and does not represent a commitment on the part of the manufacturer.

FCC NOTICE

This equipment generates, uses, and can radiate radio frequency energy and if not installed and used in accordance with this manual, may cause interference to radio communications. It has been tested and found to comply with the limits for a Class A digital device pursuant to Subpart J of Part 15 of FCC Rules, which are designed to provide reasonable protection against interference when operated in a commercial environment. Operation of this equipment in a residential area is likely to cause interference in which case the user at his own expense will be required to take whatever measures may be required to correct the interference.

LOGIC CONTROLS, INC.

404 Sunport Lane, Suite #550
Orlando, FL 32809
TEL: (516) 248-0400
www.logiccontrols.com

ATTENTION: This document contains confidential information regarding this project, not being allowed the copy of this document as well as the spreading to people not authorized by Logic Controls.

1 Revision History Table

Doc. Rev	Comments	Date	Revised by
V1.0	First Issue	11/04/2019	Peter Li
V1.1	Y-cable used	02/03/2020	Peter Li

Table of Contents

1	INTRODUCTION.....	1
1.1	PACKAGE CONTENT	1
1.2	PRODUCT OVERVIEW	1
1.3	FEATURES	1
2	INSTALLATION.....	2
3	DRIVER INSTALLATION GUIDE	3
3.1	DOWNLOAD DRIVERS FOR OS.....	3
3.2	INSTALL DRIVER UNDER WINDOWS 10	3
4	TOUCH SCREEN SETTINGS.....	6
5	PRODUCT SPECIFICATIONS	9

1 Introduction

1.1 Package content

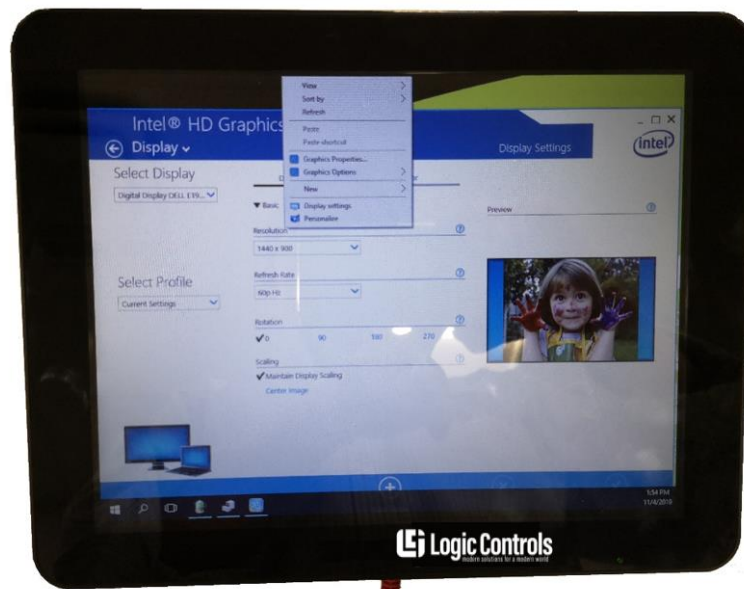
Inside the product packaging are the following items. If any of these items are missing or damaged, contact your dealer.

- LV5000 / LV5000T set
- USB cable (two USB-A plugs must be used to make the display work correctly)
- Quick Reference Guide

1.2 Product Overview

Logic Controls LV5000/LV5000T is a 9.7" TFT LCD customer display with compact and ecological design. The power consumption is about 2.5W with LED backlight. Two USB-A plugs of the USB cable are used for delivering power and transaction information at the same time.

The P-Cap touch screen is an option of LV5000T, and The USB cable is also used for transaction touch screen signals.



1.3 Features

- 9.7" LCD display with LED backlight
- Optimal display resolution 1024 * 768
- No ventilation hole design
- Light weight, only 1.8lb physically for display without the pole and base.
- VESA 75 * 75 mm wall mount standard
- True flat panel screen
- P-CAP touch screen (optional)

2 Installation

To install the product, follow the steps below.

1. Remove the four screws on base metal plate.
2. Pass the USB cable through the base from bottom.
3. Pass the USB cable through the pole from the bottom.
4. Reinstall the metal plate and attach the pole onto the stand base.
5. Pass USB cable through the hinge cover.
6. Plug the micro-plugger of USB cable to the monitor.
7. Attached the hinge cover to the monitor with four screws.
8. Install monitor module to pole.
9. Installation complete.

Brightness Control



Up / Down keys:

When adjustment item is selected, the two keys are defined to decrease or increase the value of brightness.

3 Driver Installation Guide

3.1 [Download Drivers for OS](#)

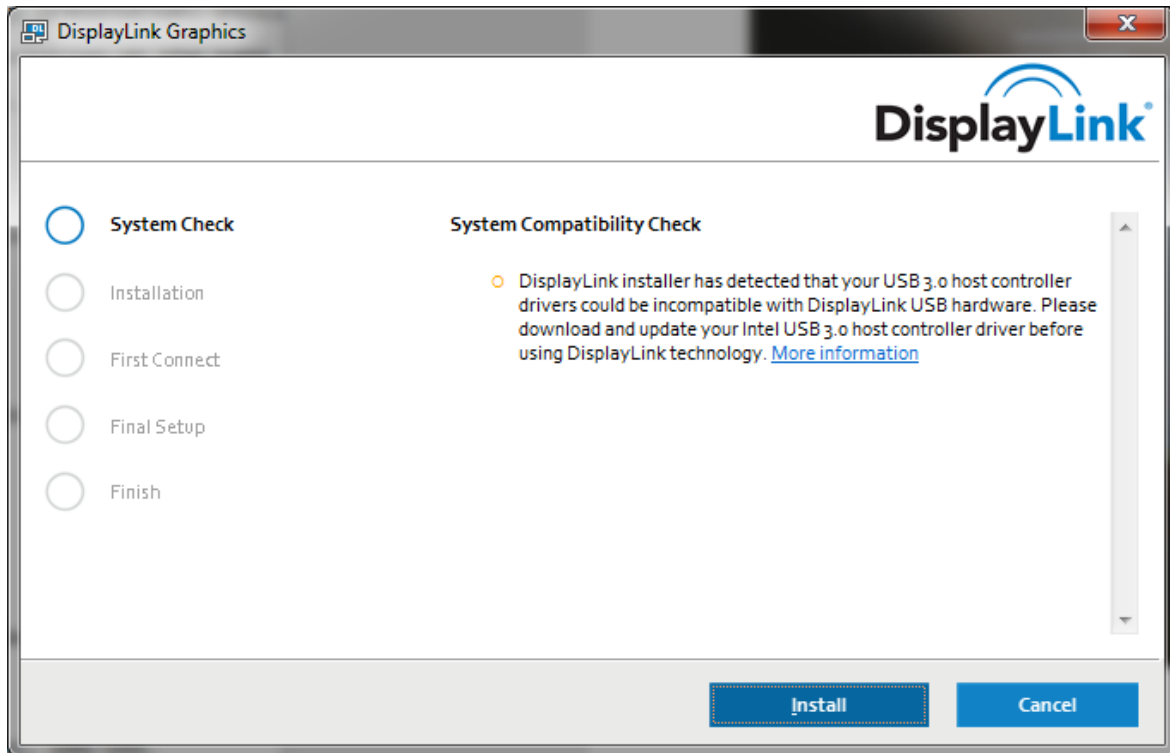
This display uses drivers of “DisplayLink” for Windows OS, macOS, Linux (Ubuntu), Android and chromebook OS. Download proper driver files for your OS from the following link, and install the driver following the instructions.

<http://www.displaylink.com/downloads>

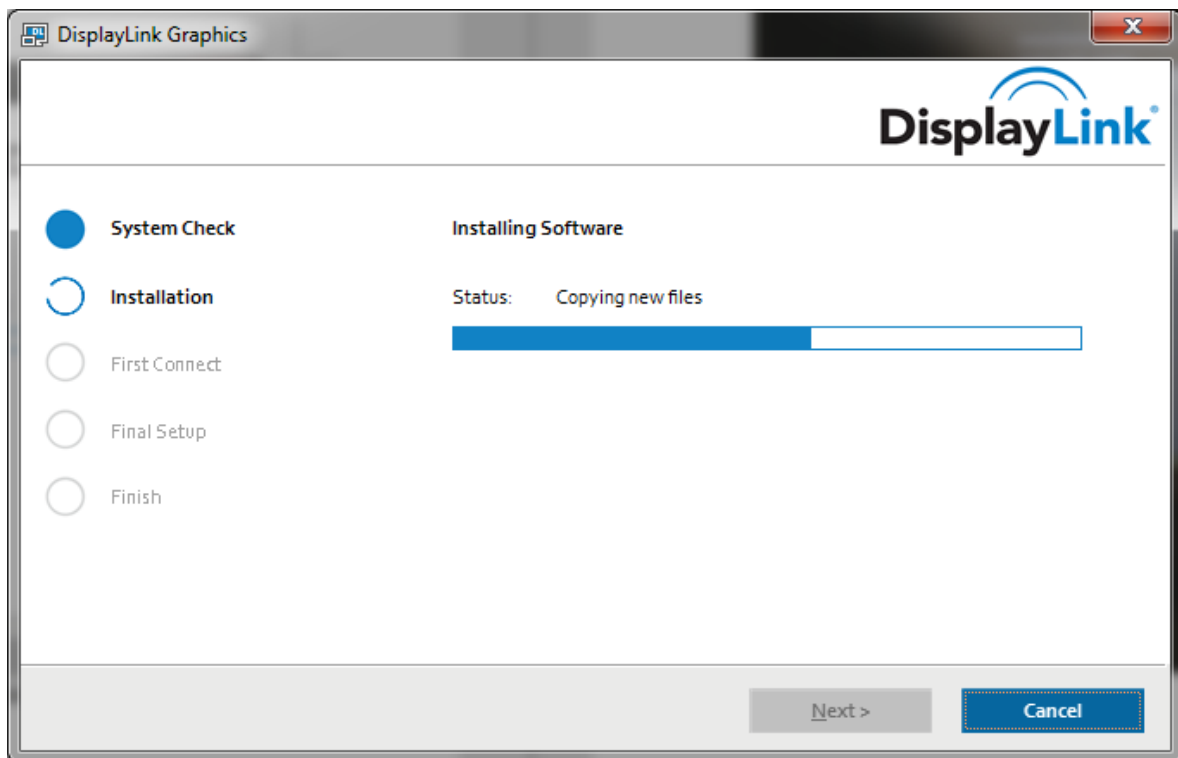
3.2 [Install Driver under Windows 10](#)

Once the driver is downloaded, double click the “DisplayLink USB Graphics Software for Windows ****.exe” file to start installation.

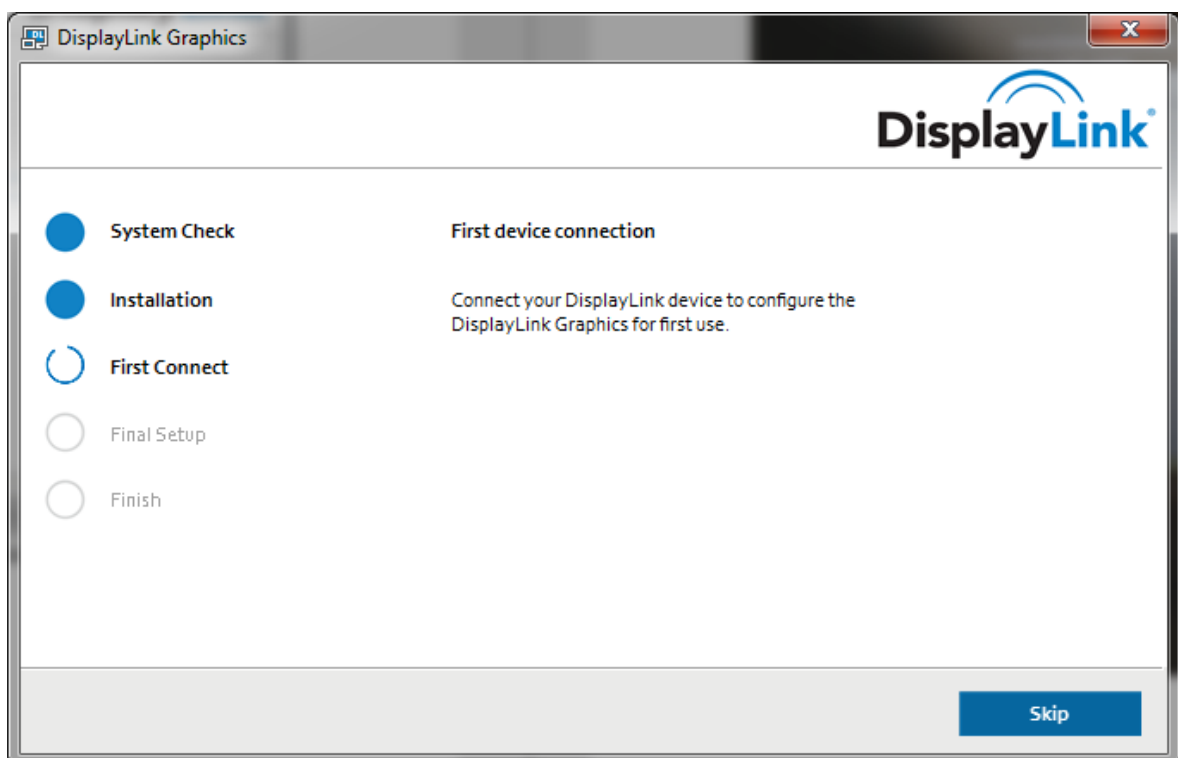
1. Running the DisplayLink installation software, there is a message window pop-out.



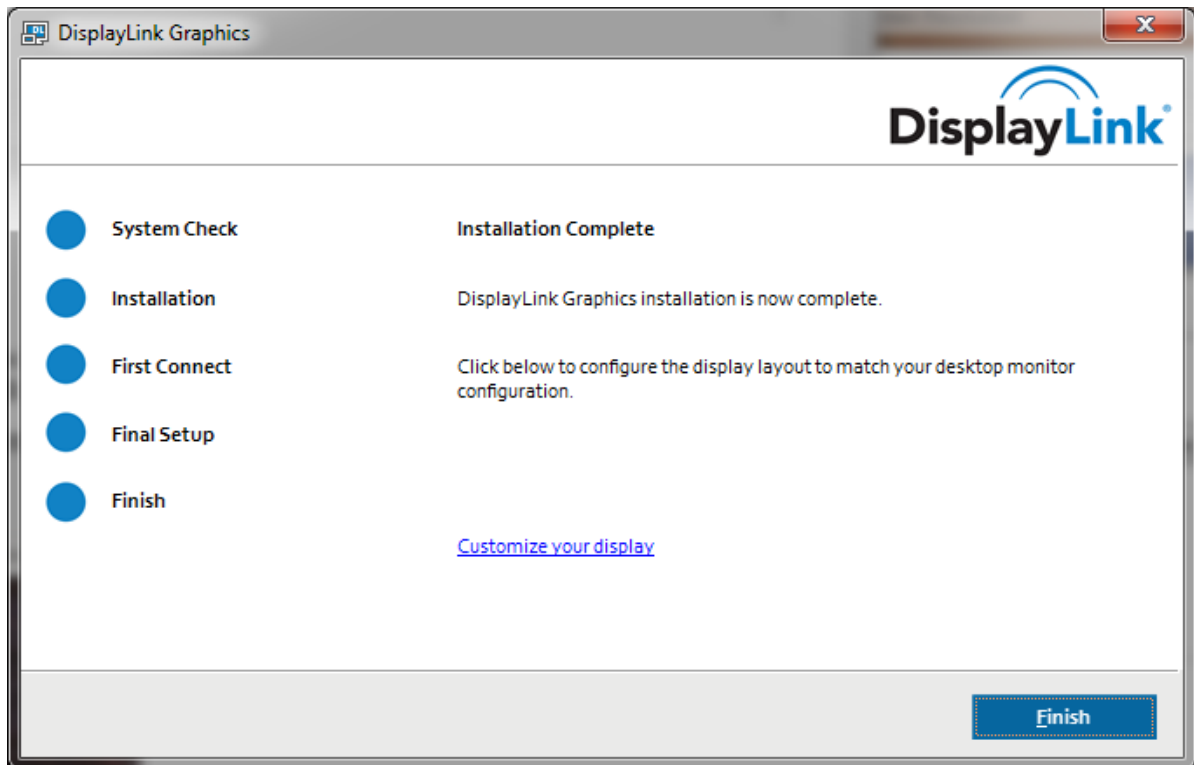
2. Click “Install” button after “System Check” finished. An “Installation” message window pop-out.



3. Wait until the installation finished. The utility software will ask you to plug the USB cable of LV5000 into the PC USB socket.

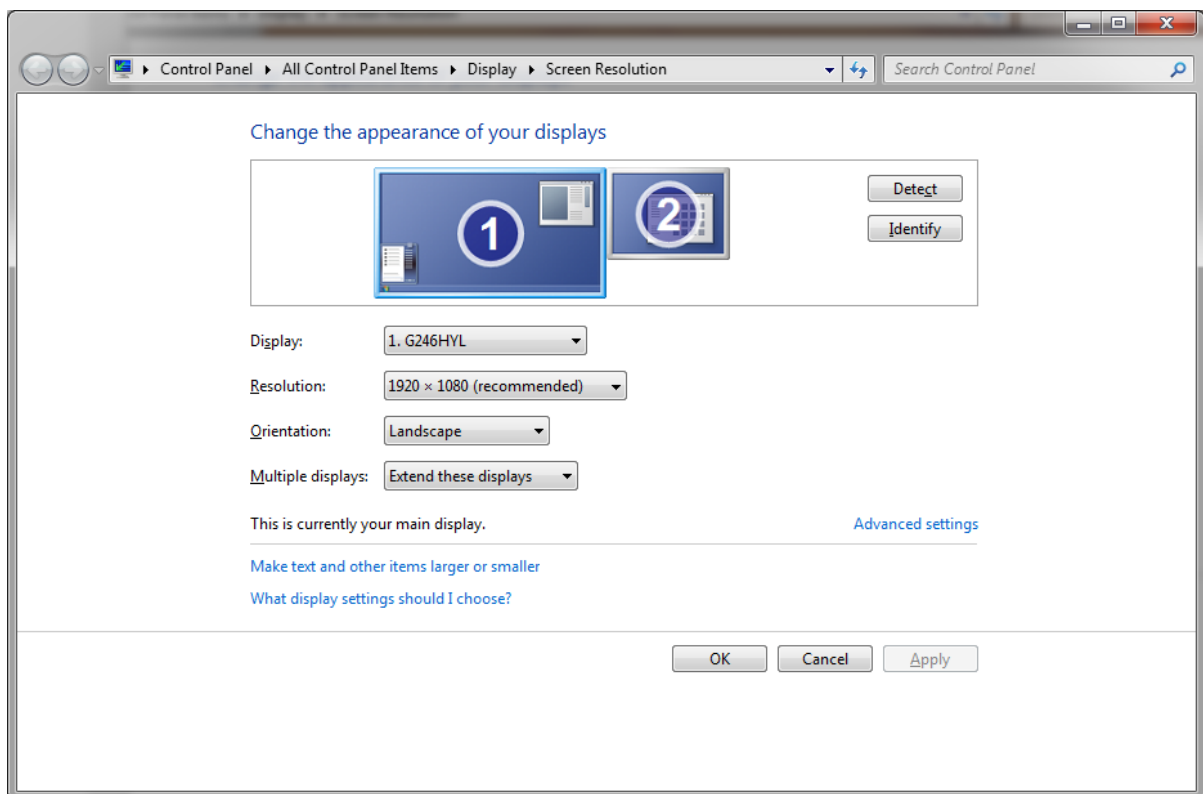


4. The Windows driver will be installed automatically for the device. The following window will be pop-out, which shows the Windows driver has been installed correctly.



5. Click “Finish” button to finish the installation of the driver.

The window picture will be displayed on the LV5000 screen. And the following window will pop-out on your main PC screen.



Now, you have added LV5000 as another screen with your Windows 10 OS.

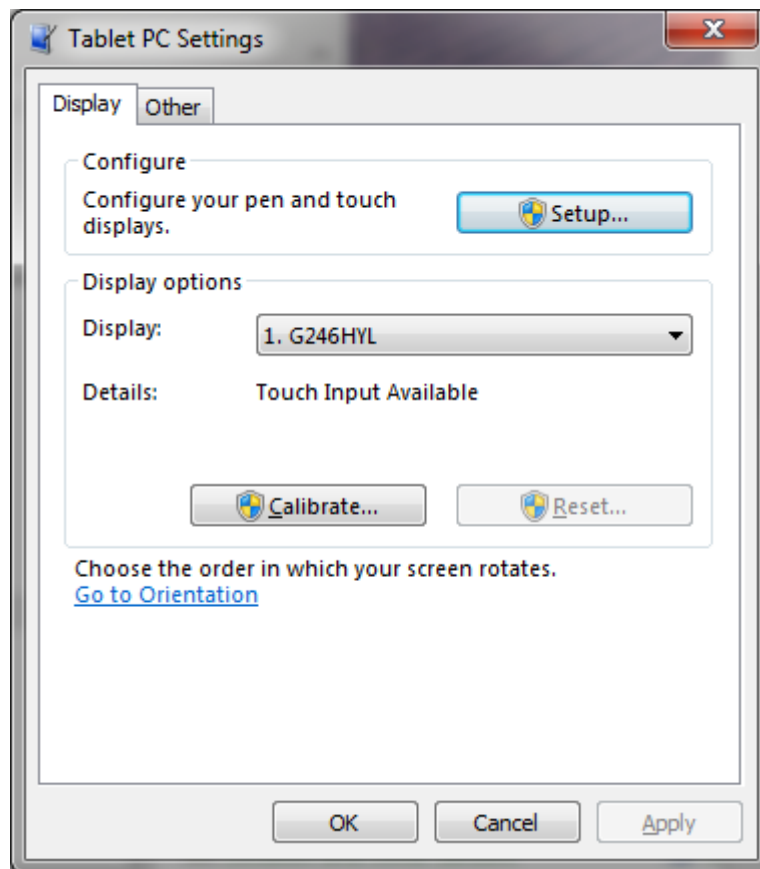
4 Touch Screen Settings

The touch screen feature is optional.

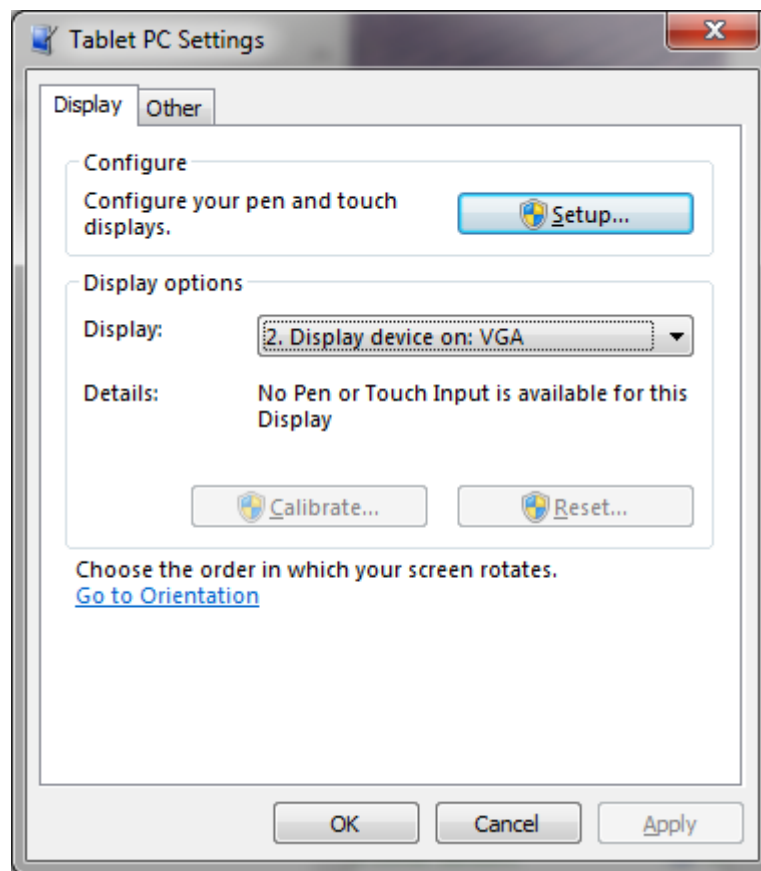
The Windows standard HID driver is used for the touch screen feature of LV5000T. There is no extra-driver needed.

You can use the touch screen after you install “DisplayLink” Windows driver. But you will see the touch point is on the main screen, rather than on the screen of LV5000T. So, you need the following settings to make the touch feature works correctly.

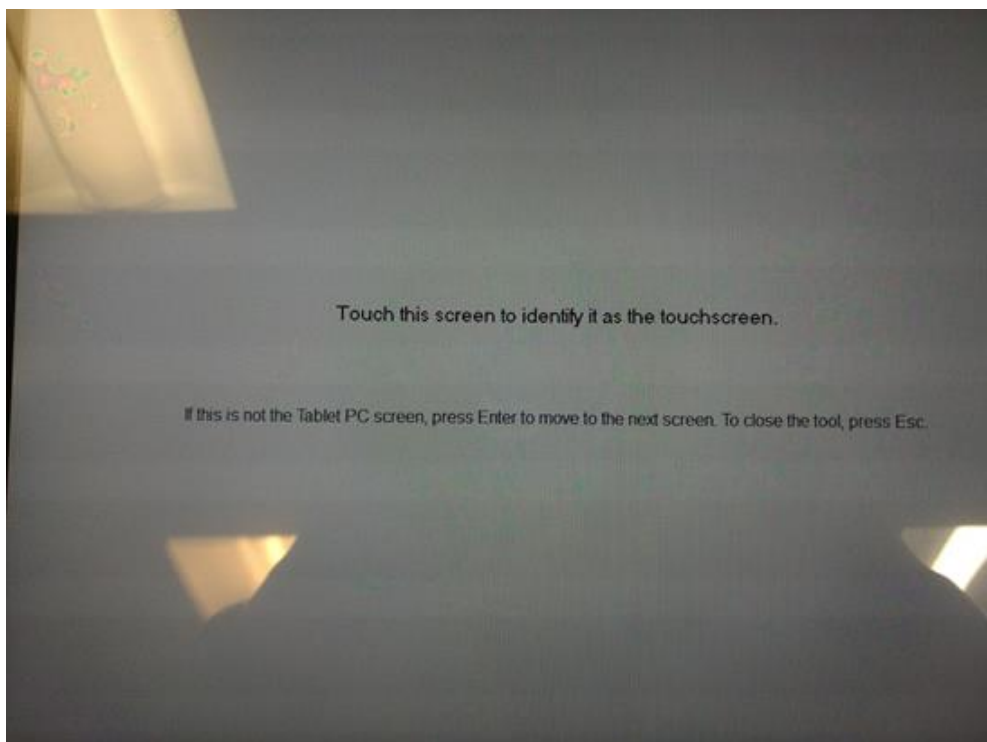
1. Select “Control Panel > Tablet PC Settings”, the window shows:



2. Select “Display device on: VGA”

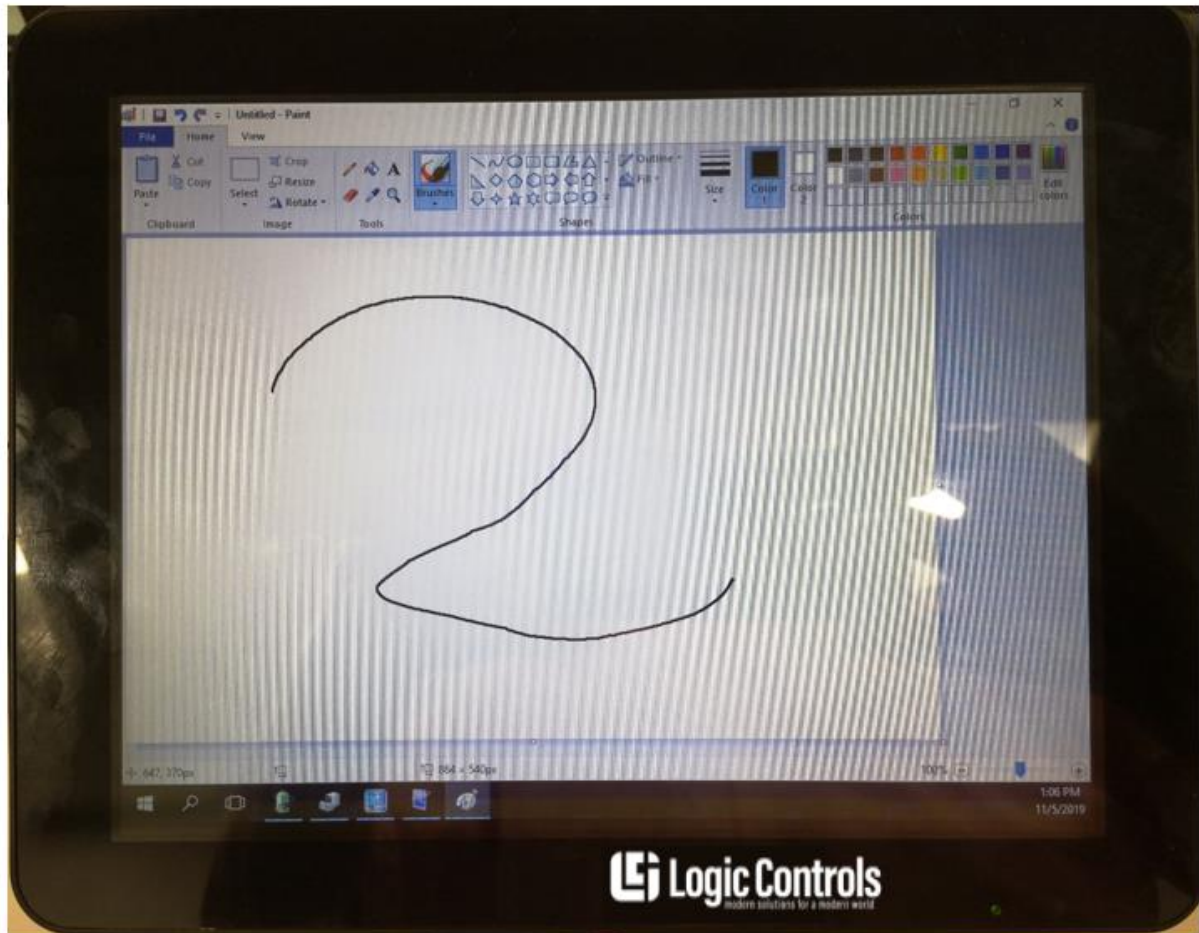


3. Click “Setup” button



4. Hit “Enter” key until the above picture displayed on the LV5000T screen.
5. Touch the screen of LV5000 once. The setting is finished.

Then, you can use “Paint” for drawings as below.



5 Product Specifications

Specification	Description
LCD Panel	9.7" TFT-LED Panel
Resolution	SVGA (1024 x RGB x 768)
Display Active Area	196.61(H) × 147.46(V)
Response Time	20 ms typ.
Contrast Ratio	400:1 typ.
Brightness	250 cd/m ² typ.
View Angle(CR≥10)	50/60/60/60(Up/Down/Left/Right) Typ.
Uniformity	75% Typ.
Input Interface	USB
Power Consumption	≤5.5 W
Power Saving Mode	0.25W
Environment	
Operating Temperature	0 to 40°C
Relative Humidity	20% to 80%
Power Supply	USB Port DC5V
Options	
Key Function	Brightness Control
Touch Screen	Capacitive (Option)

Mechanical dimensions:

